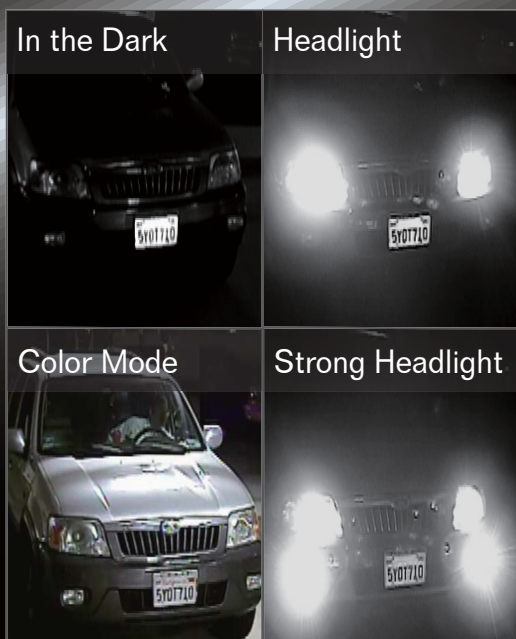


SHANY

Car License Plate Pro Camera
MTC-LV6638HQ

D/N, Anti-Headlight
Parking Lot



MTTC-LV6638HQ, is ideal for capturing car license plates. Even under strong headlight influences or other impossible situations like during the day or at night, the captured image can still stay clear and recognizable. This car license plate camera was built with Sony Super HAD CCD II and the Sony HQ1 DSP, and the resolution of MTC-LV6638HQ can hit 540 TVL. MTC-LV6638HQ also has fabulous functions as Mechanical Visible Light Filter, Dynamic Noise Reduction (DNR), and Sense-Up for capturing excellent image qualities. You can use it on any kind of entrances or any kind of situations.

MTC-LV6638HQ adopts f3.8~9.5mm D/N varifocal lens. It performs perfectly from 1.5 to 6 meters. For the best results, you can see the suggestion of "Suggestions for Focal Length and Object Distance". And the patent external adjustment makes it easy to modify the varifocal lens. When it comes to Car License Plate Camera, our selection simply provides smarter choices for you.

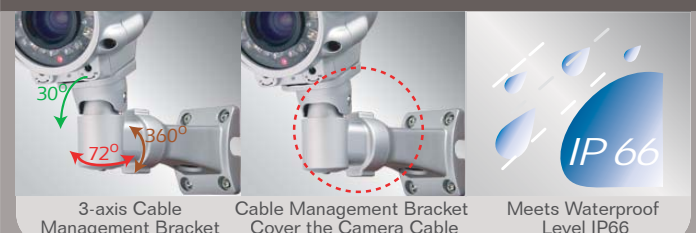
Suggestions for Focal Length and Object Distance

Focal Length	Object Distance	f3.8~4.0 - 2M
f3.8~4.0 mm	1.5M~2.5M	
f6.0~6.5 mm	2.0M~4.0M	
f9.0~9.5 mm	4.0M~6.0M	
f6.0~6.5 - 2M		
f6.0~6.5 - 4M		
f9.0~9.5 - 4M		
f9.0~9.5 - 6M		

External Adjustment



3-axis Cable Management Bracket with IP66



Car License Plate Pro Camera (D/N, Anti-Headlight, Parking Lot)

Products List > C Series > Camera > Car License Plate Pro Camera (HQ1) > MTC-LV6638HQ

MTC-LV6638HQ

MTC-LV6638HQ



FEATURES



Mechanical IR Cut Filter (ICR)

Preliminary



Anti-Head Light at Parking Lot for Capturing Car License Plate (2~6M)

Option:

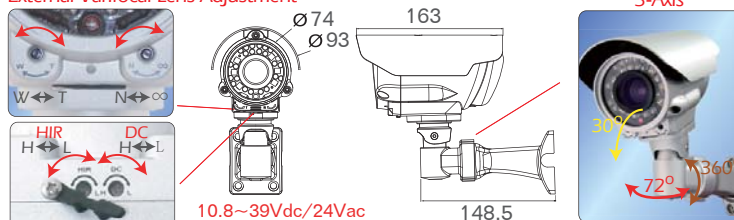


MTB-414S Pole Mount

MTC-LV6638HQ new

- ◆ 1/3" Car License Plate Pro Camera
- ◆ SONY HQ1 / 540TVL / 0 Lux (IR LEDs on at 2 Lux)
- ◆ Built-in Aspherical D/N Lens (f3.8~9.5mm)
- ◆ Anti-Headlight: Capture Car License Plate with Strong Light
- ◆ Mechanical Visible Light Filter for Clearer Images at Night
- ◆ External Varifocal Lens Adjustment
- ◆ User Friendly DC Level & High Power IR LEDs Adjustments
- ◆ 3-axis Adjustable & Cable Management Bracket
- ◆ Built-in DNR & Sense Up

External Varifocal Lens Adjustment



DC Level & HIR adjustments

Tol: ±0.5 Unit:mm

SPECIFICATIONS

	MTC-LV6638HQ	
	PAL	NTSC
TV System	PAL	NTSC
Image Sensor	1/3" Sony Super HAD CCD II	
Number of Total Pixels	795(H)x596(V)	811(H)x508(V)
Resolution ; DSP	540TVL ; Sony HQ1	
Minimum Illumination	0 Lux	
Video Output ; Connector	1.0Vp-p Composite, 75Ω ; BNC	
Signal to Noise Ratio	More than 50dB	
Gamma Correction	0.45	
Mechanical Visible Light Filter	Automatically Switches (B/W mode<2Lux, Color mode>5Lux)	
IR LED	IR LEDs on<2Lux, IR LEDs off>5Lux	
Synchronizing System	Internal	
Automatic Electronic Shutter	Automatic, 1/50(60)sec. ~1/100,000sec.	
Automatic Gain Control	Automatic	
Automatic White Balance	Automatic	
Back Light Compensation	NA	
Flickerless	NA	
DNR ; Sense Up	Automatic Dynamic Digital Noise Reduction (DNR) ; Automatic	
Digital Day&Night Mode	COLOR (Day:Color, Night:Color) / D&N (Day:Color, Night:B/W)	
Automatic IRIS	DC	
Adjustment VR	DC Level	
Lens Mount	Built-in DC Auto IRIS Lens	
Lens, Angle of View(H) ;	f3.8mm~9.5mm/F1.2 Aspherical D/N Lens/74.2°~30.0° ;	
License Plate Working Distance	2~6M	
Water Resistance	IP66	
Max. Breaking Strength	NA	
Power Supply ; Consumption	10.8~39Vdc/24Vac ; 12Vdc: IR on:7.2W(0.6A) IR off:2.4W(0.2A), 24Vac: IR on:7.2W(0.3A) IR off:2.4W(0.1A)	
Operation ; Storage Temp.	-10°C~50°C , -20°C~60°C	
Operation ; Storage Humidity	Maximum: RH80% ; RH90%	
Dimensions	93(DIA)x163(D)mm	
Net Weight	800g	
Accessories Series Option(Page)	NA	